

# MONTHLY MEMBERSHIP PROGRESS REPORT

LOCATION ENGLAND

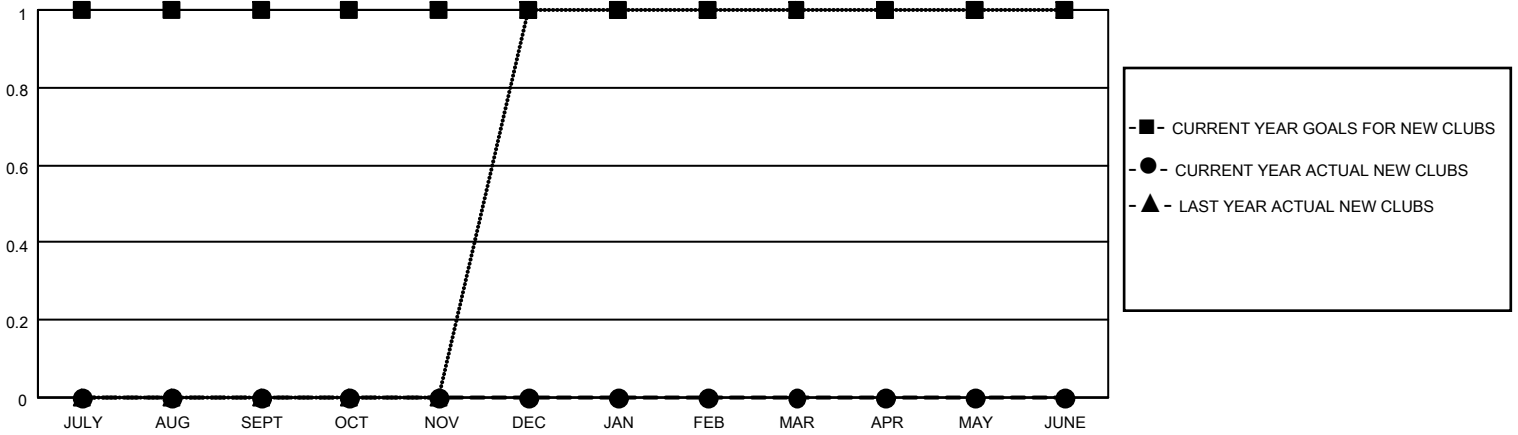
District 105CE

Results as of: 6/30/2021

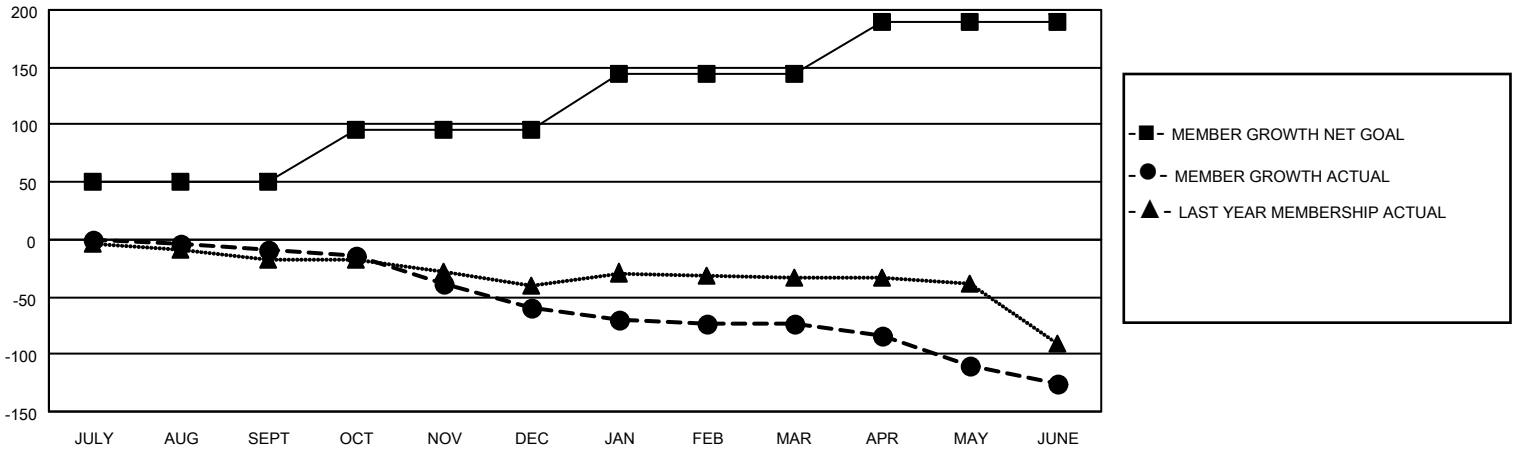
Clubs			
RESULTS FOR 2020-2021			
QUARTER	NEW CLUB GOAL	NEW CLUBS	DROPPED CLUBS
JULY/AUG/SEPT	1	0	0
OCT/NOV/DEC	0	0	1
JAN/FEB/MAR	0	0	1
APR/MAY/JUNE	0	0	1

Members			
RESULTS FOR 2020-2021			
QUARTER	MEMBER GROWTH NET GOAL	MEMBER GROWTH ACTUAL	DROPPED MEMBERS ACTUAL (including transfers)
JULY/AUG/SEPT	50	23	31
OCT/NOV/DEC	45	18	65
JAN/FEB/MAR	50	17	30
APR/MAY/JUNE	45	31	72

**GOALS AND ACTUAL NEW CLUBS CUMULATIVE**



**GOALS AND ACTUAL MEMBERS CUMULATIVE**



**DROPPED CLUBS: 3**

**36 CLUBS OF 95 ADDED 1 OR MORE NEW MEMBERS**

**GENDER DISTRIBUTION**

MALE 1,135 (70.72%)  
FEMALE 470 (29.28%)

**DROPPED MEMBERS**

DECEASED	28
CLUB CANCELLED	0
OTHER	170
<b>TOTAL</b>	<b>198</b>

[CLICK HERE FOR CUMULATIVE MEMBERSHIP DATA](#)

TOTAL FAMILY UNIT MEMBERS	298
FAMILY MEMBERS PAYING HALF DUES	151